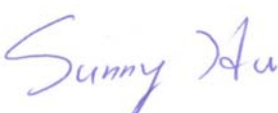



<b>Prüfbericht - Nr.:</b> <b>0114042705a 001</b>		<b>Seite 1 von 4</b>	
<i>Test Report No.:</i>		<i>Page 1 of 4</i>	
<b>Auftraggeber:</b> <i>Client:</i>	King Tony Tools Co., Ltd. No. 11, Alley 150, Lane 516 Sec. 2, Hsi Nan Rd., Wu-Jih Dist., Taichung City 414, Taiwan, R.O.C.		
<b>Gegenstand der Prüfung:</b> <i>Test Item:</i>	Component of Insulated Screwdriver		
<b>Bezeichnung:</b> <i>Identification:</i>	1471 & 1478 series 1472 series		
<b>Anlieferungszustand:</b> <i>Delivery condition:</i>	apparent good	<b>Eingangsdatum:</b> <i>Date of Receipt:</i>	2015-09-18 2015-11-05 (2 <sup>nd</sup> delivery)
<b>Prüfört:</b> <i>Testing location:</i>	TÜV Rheinland Hong Kong Ltd.		
<b>Prüfgrundlage:</b> <i>Test specification:</i>	Overall result according to test(s) performed Polycyclic aromatic hydrocarbons (PAHs) - according to GS Specification – AfPS GS 2014:01 PAK		
<b>Prüfergebnis:</b> <i>Test result:</i>	According to the kind and extend of tests performed the above mentioned test item passed the test specification.		
<b>geprüft:</b> <i>tested by:</i>	<b>kontrolliert:</b> <i>checked by:</i>		
			
2015-11-17 Sunny Hu /Senior Specialist		2015-11-17 Tammy Wang /Project Manager	
<b>Datum</b> <i>Date</i>	<b>Name/Stellung</b> <i>Name/Position</i>	<b>Unterschrift</b> <i>Signature</i>	<b>Datum</b> <i>Date</i>
<b>Sonstiges/ Other Aspects:</b>			
Test period: 2015-09-18 – 2015-09-30 ; 2015-11-05 – 2015-11-17			
<b>Abkürzungen:</b>		<b>Abbreviations:</b>	
ok / P = entspricht Prüfgrundlage		ok / P = passed	
fail / F = entspricht nicht Prüfgrundlage		fail / F = failed	
n.a. / N = nicht anwendbar		n.a. / N = not applicable	
<b>Dieser Prüfbericht bezieht sich nur auf das o.g. Prüfmuster und darf ohne Genehmigung der Prüfstelle nicht auszugsweise vervielfältigt werden. Dieser Bericht berechtigt nicht zur Verwendung eines Prüfzeichens.</b>			
<i>This test report relates to the a. m. test sample. Without permission of the test center this test report is not permitted to be duplicated in extracts. This test report does not entitle to carry any safety mark on this or similar products.</i>			



Test Report No. : 0114042705a 001  
 Customer : King Tony Tools Co., Ltd.

2015-11-17

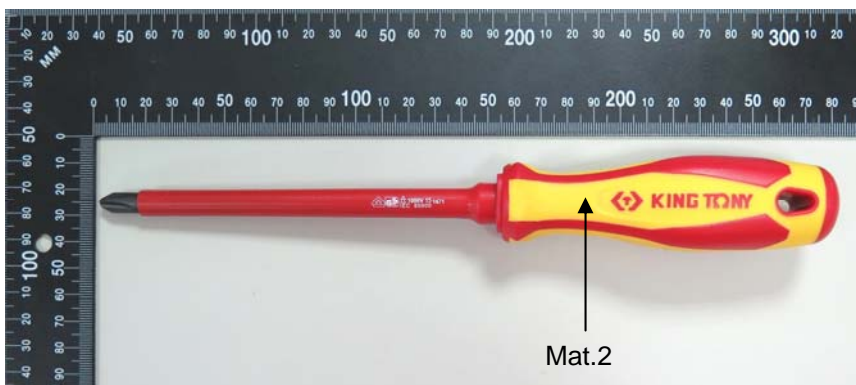
Sample: Component of Insulated Screwdriver /  
 1471 & 1478 series  
 1472 series

Lab No.: TCL150918-13

**Material List**

Mat. no.	Location / Function	Name / Description	Material	Color
1	Handgrip/ Red	PP Mfr.: Long Jin	Plastic	Red
2	Handgrip/ Yellow (Replaced by TCL151105-06)	TPR Mfr.: Long Jin	Plastic	Yellow

**Test Sample**



Test Report No. : 0114042705a 001  
 Customer : King Tony Tools Co., Ltd.  
 Test Method : PAHs - AfPS GS 2014:01 PAK

2015-11-17

Sample/Material No.				1	2
Parameter	CAS No.	Unit	RL	Result	Result
Acenaphthene	83-32-9	mg/kg	0.2	n.d.	n.d.
Acenaphthylene	208-96-8	mg/kg	0.2	n.d.	n.d.
Anthracene	120-12-7	mg/kg	0.2	n.d.	n.d.
Benzo[a]anthracene	56-55-3	mg/kg	0.2	n.d.	n.d.
Benzo[a]pyrene(BaP)	50-32-8	mg/kg	0.2	n.d.	n.d.
Benzo[b]fluoranthene	205-99-2	mg/kg	0.2	n.d.	n.d.
Benzo[k]fluoranthene	207-08-9	mg/kg	0.2	n.d.	n.d.
Benzo[j]fluoranthene	205-82-3	mg/kg	0.2	n.d.	n.d.
Benzo[g,h,i]perylene	191-24-2	mg/kg	0.2	n.d.	n.d.
Benzo[e]pyrene	192-97-2	mg/kg	0.2	n.d.	n.d.
Chrysene	218-01-9	mg/kg	0.2	n.d.	n.d.
Dibenzo[a,h]anthracene	53-70-3	mg/kg	0.2	n.d.	n.d.
Fluoranthene	206-44-0	mg/kg	0.2	n.d.	n.d.
Fluorene	86-73-7	mg/kg	0.2	n.d.	n.d.
Indeno[1,2,3-cd]pyrene	193-39-5	mg/kg	0.2	n.d.	n.d.
Naphthalene	91-20-3	mg/kg	0.2	0.6	0.3
Phenanthrene	85-01-8	mg/kg	0.2	n.d.	n.d.
Pyrene	129-00-0	mg/kg	0.2	n.d.	n.d.
Sum of Acenaphthylene, Acenaphthene, Anthracene, Fluoranthene, Fluorene, Phenanthrene, Pyrene	-	mg/kg	-	n.d.	n.d.
Sum of 18 PAHs	-	mg/kg	-	0.6	0.3
Category	-	-	-	2	2
Conclusion				pass	pass

Abbreviation: n.d. = not detected (< Reporting Limit)  
 RL = Reporting Limit  
 NA = Not Applicable  
 mg/kg = milligram per kilogram

Test Report No. : 0114042705a 001  
 Customer : King Tony Tools Co., Ltd.

2015-11-17

Remark:

\*PAH maximum permissible limits requirement from the GS-Mark Approval published by the German Federal Institute for Occupational Safety and Health (BAuA)

Parameter	Unit	Category 1	Category 2		Category 3	
		Materials intended to be put into the mouth or materials of toy for children with long term intended skin contact (longer than 30 s)	Materials not covered by category 1, with foreseeable long term skin contact (longer than 30 s) or repeated short-term skin contact		Materials not covered by category 1 or 2, with foreseeable short term contact (shorter than 30 s)	
Benzo[a]pyrene(BaP)	mg/kg	<0.2	<0.2	<0.5	<0.5	<1
Benzo[e]pyrene	mg/kg	<0.2	<0.2	<0.5	<0.5	<1
Benzo[a]anthracene	mg/kg	<0.2	<0.2	<0.5	<0.5	<1
Benzo[b]fluoranthene	mg/kg	<0.2	<0.2	<0.5	<0.5	<1
Benzo[j]fluoranthene	mg/kg	<0.2	<0.2	<0.5	<0.5	<1
Benzo[k]fluoranthene	mg/kg	<0.2	<0.2	<0.5	<0.5	<1
Chrysene	mg/kg	<0.2	<0.2	<0.5	<0.5	<1
Dibenzo[a,h]anthracene	mg/kg	<0.2	<0.2	<0.5	<0.5	<1
Benzo[g,h,i]perylene	mg/kg	<0.2	<0.2	<0.5	<0.5	<1
Indeno[1,2,3-cd]pyrene	mg/kg	<0.2	<0.2	<0.5	<0.5	<1
Naphthalene	mg/kg	<1	<2	<2	<10	<10
Sum of Acenaphthylene Acenaphthene Anthracene Fluoranthene Fluorene Phenanthrene Pyrene	mg/kg	<1	<5	<10	<20	<50
Sum of 18 PAHs	mg/kg	<1	<5	<10	<20	<50

Limit: Specific evaluation required according to type of foreseeable use.

\*\* Single components with an amount of <0.2 mg/kg were not considered by the calculation of the sum.  
 In the case of all 18 PAHs were not detected, the result is stated n.d.

--- End of Test-Report ---

